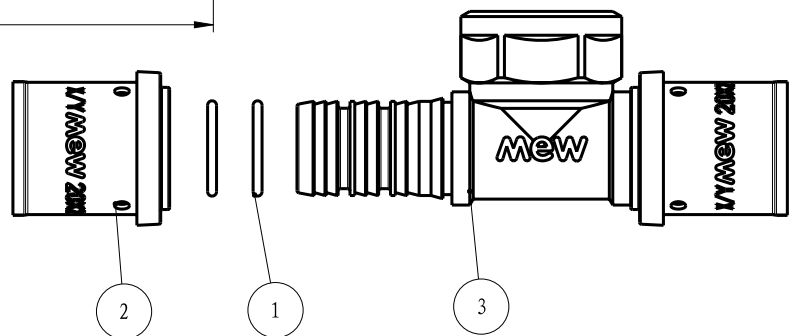
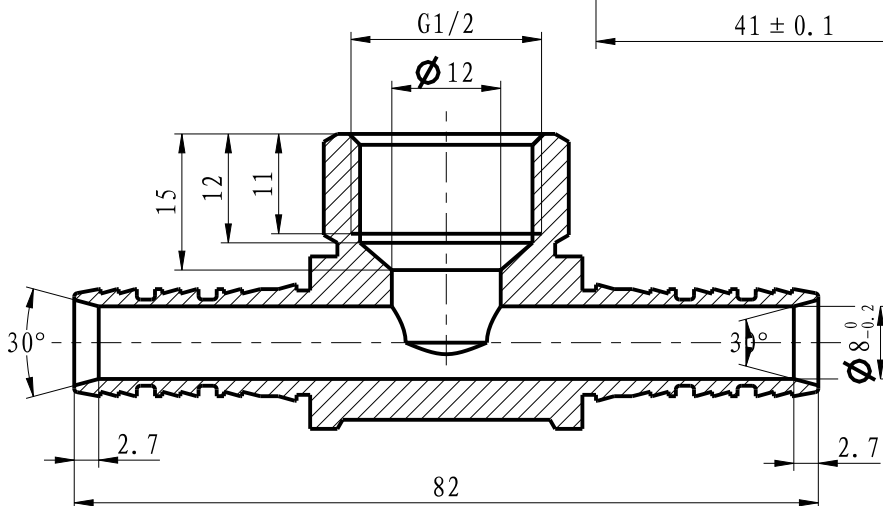
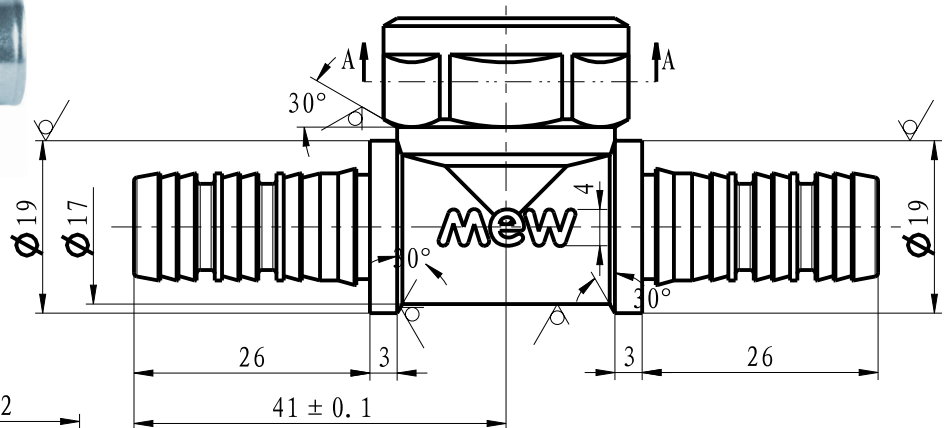
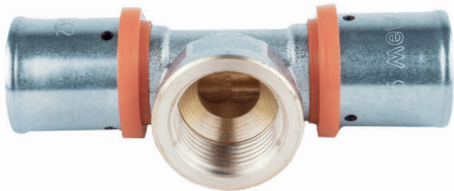




Ficha Técnica

PRESS Multicamada
Tê Rosca Fêmea
16 x 1/2" MW09030501

ESCOLHA DE PROFISSIONAL



Legenda e componentes:

Número	Componente	Material
1	Anel de vedação	EPDM
2	Casquilho	S304
3	Corpo	CW617N

Características técnicas:

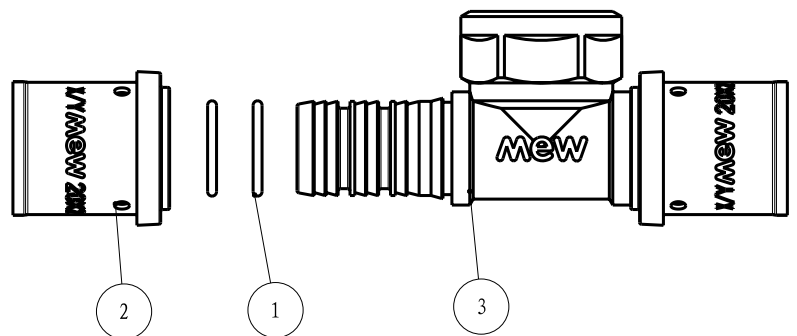
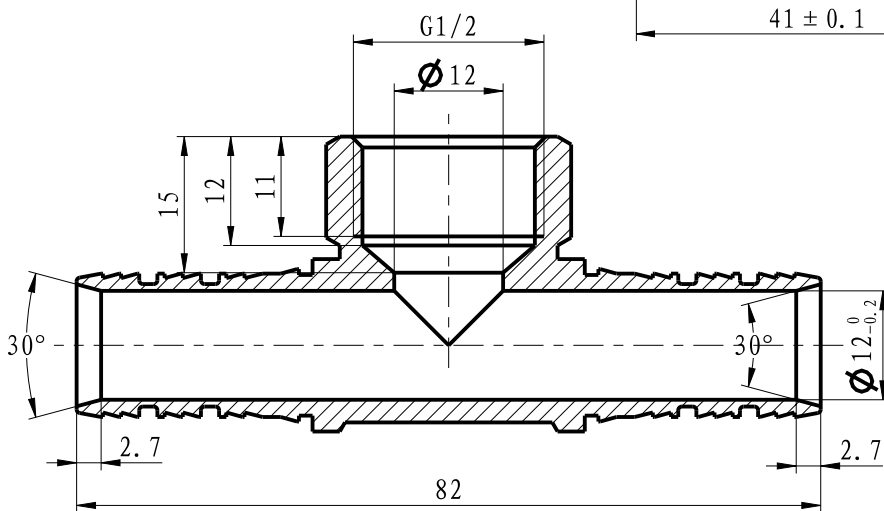
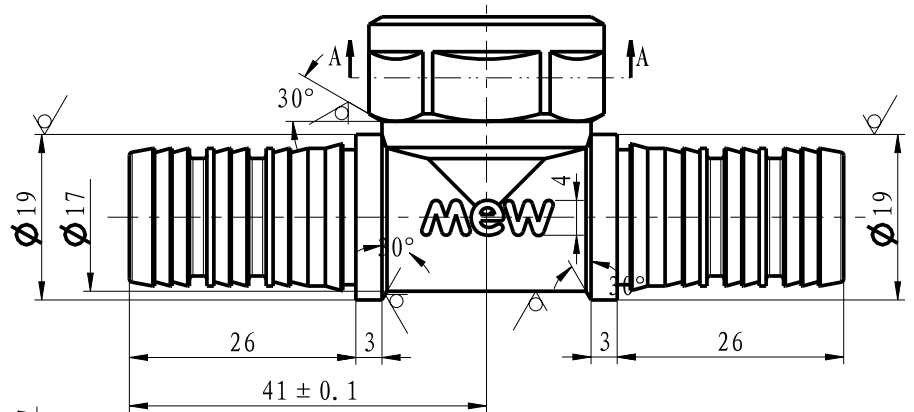
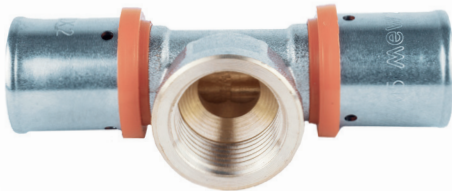
1. Peso: 108,3 gr



Ficha Técnica

PRESS Multicamada
Tê Rosca Fêmea
20 x 1/2" MW09030503

ESCOLHA DE PROFISSIONAL



Legenda e componentes:

Número	Componente	Material
1	Anel de vedação	EPDM
2	Casquilho	S304
3	Corpo	CW617N

Características técnicas:

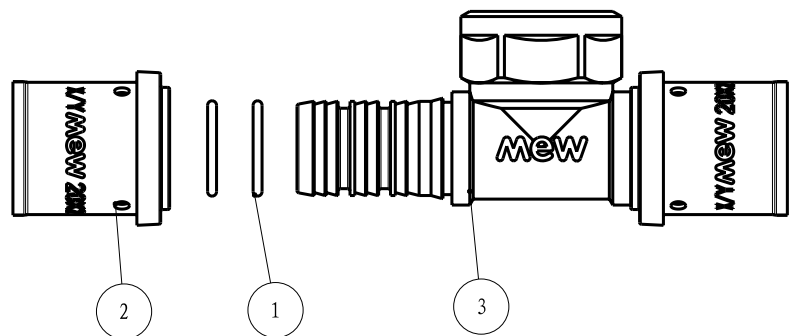
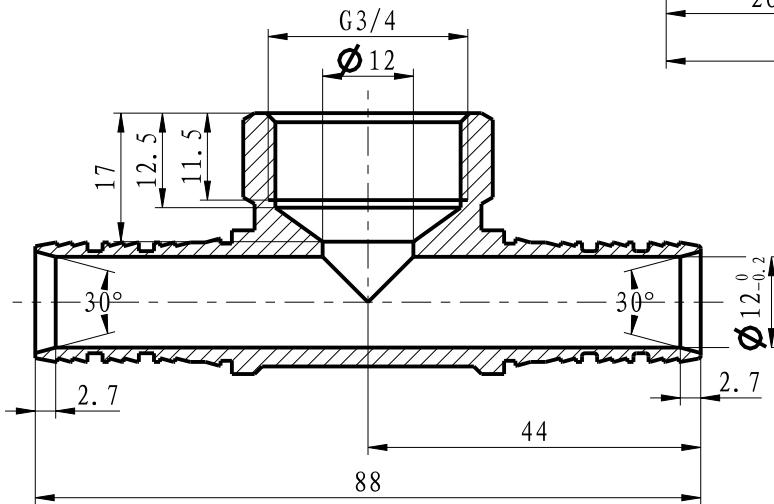
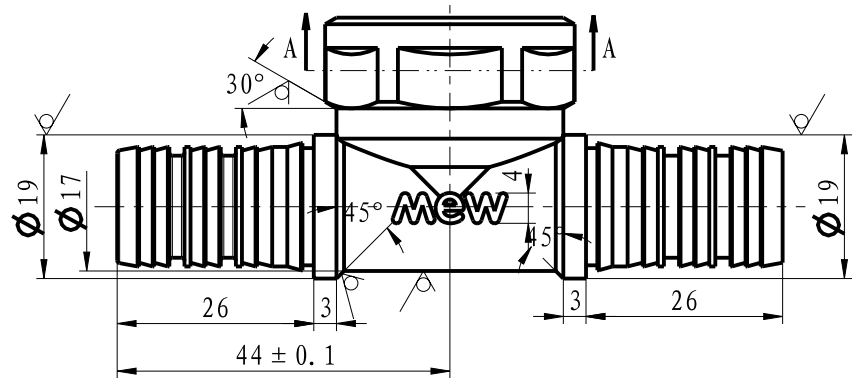
1. Peso: 110,8 gr



Ficha Técnica

PRESS Multicamada
Tê Rosca Fêmea
20 x 3/4" MW09030504

ESCOLHA DE PROFISSIONAL



Legenda e componentes:

Número	Componente	Material
1	Anel de vedação	EPDM
2	Casquilho	S304
3	Corpo	CW617N

Características técnicas:

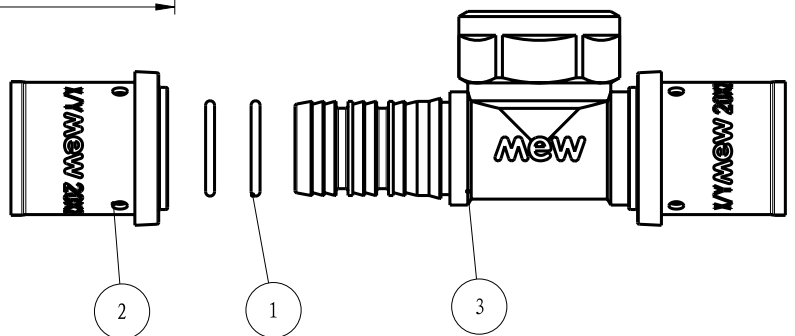
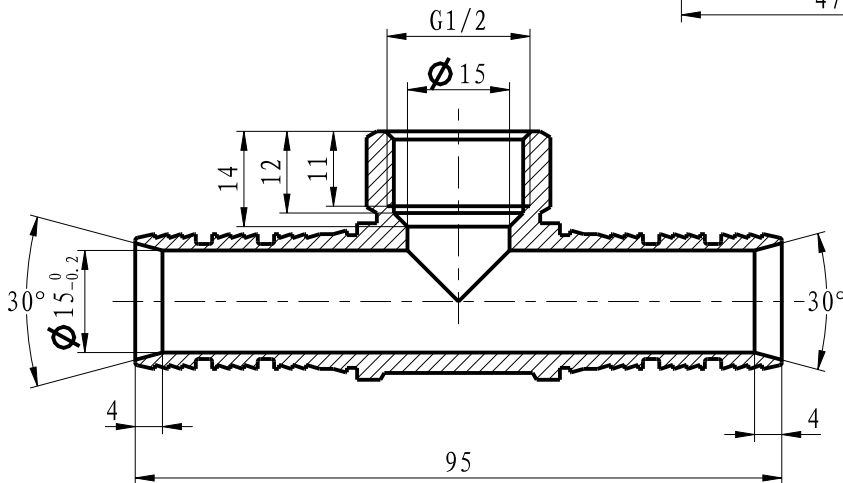
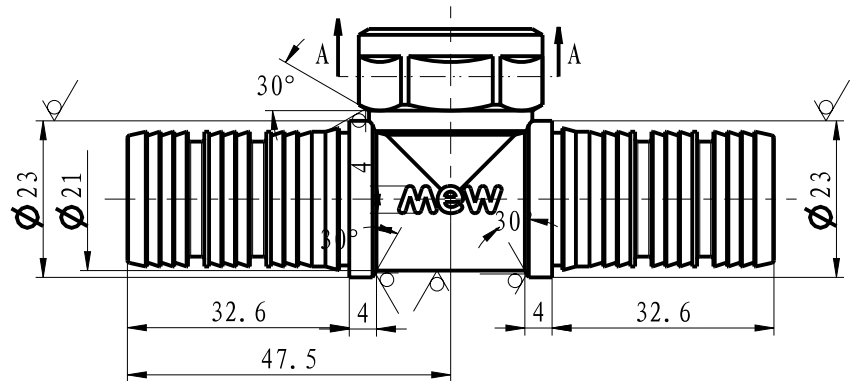
1. Peso: 137,8 gr



Ficha Técnica

PRESS Multicamada
Tê Rosca Fêmea
25 x 1/2" MW09030505

ESCOLHA DE PROFISSIONAL



Legenda e componentes:

Número	Componente	Material
1	Anel de vedação	EPDM
2	Casquilho	S304
3	Corpo	CW617N

Características técnicas:

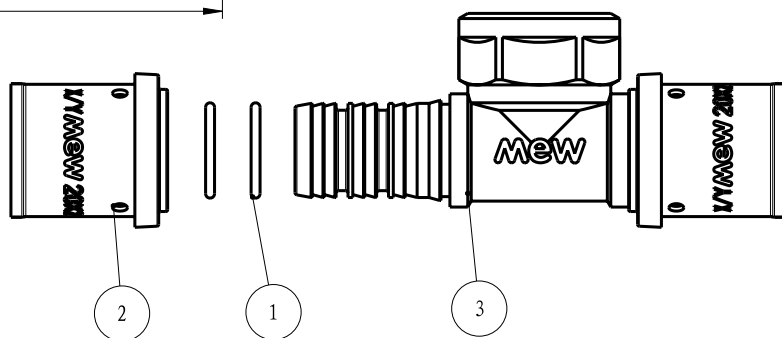
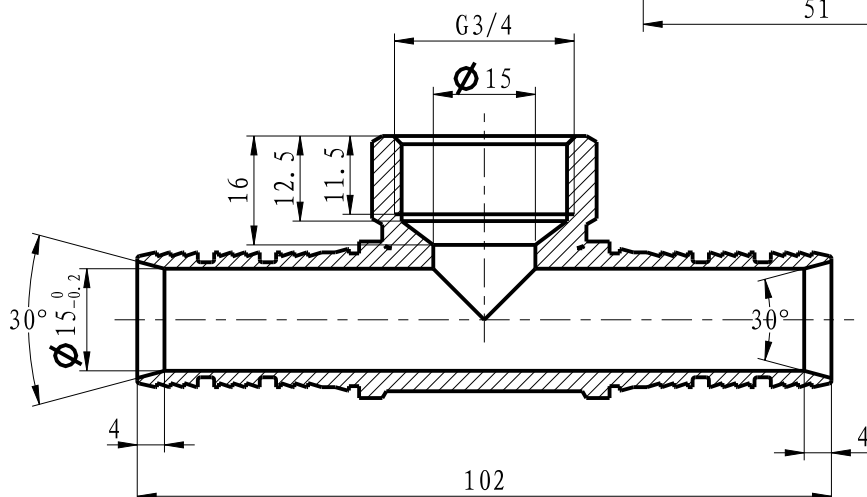
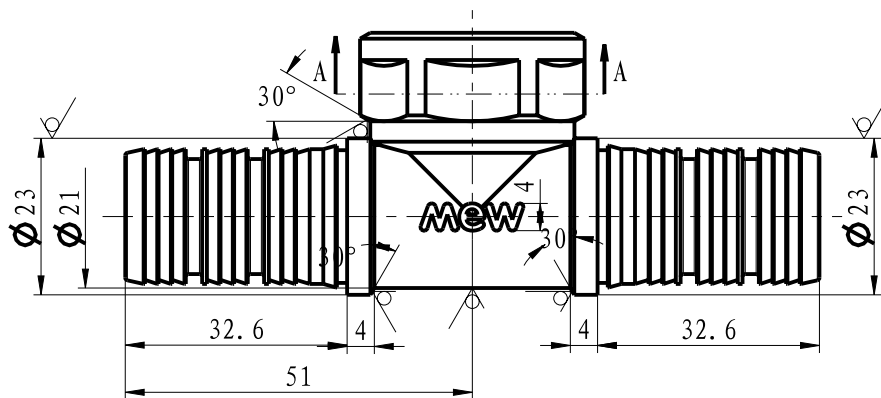
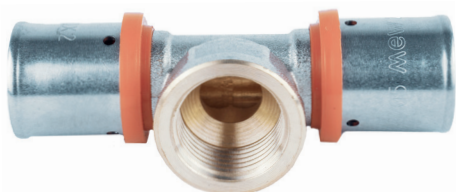
1. Peso: 165,6 gr



Ficha Técnica

PRESS Multicamada
Tê Rosca Fêmea
25 x 3/4" MW09030506

ESCOLHA DE PROFISSIONAL



Legenda e componentes:

Número	Componente	Material
1	Anel de vedação	EPDM
2	Casquilho	S304
3	Corpo	CW617N

Características técnicas:

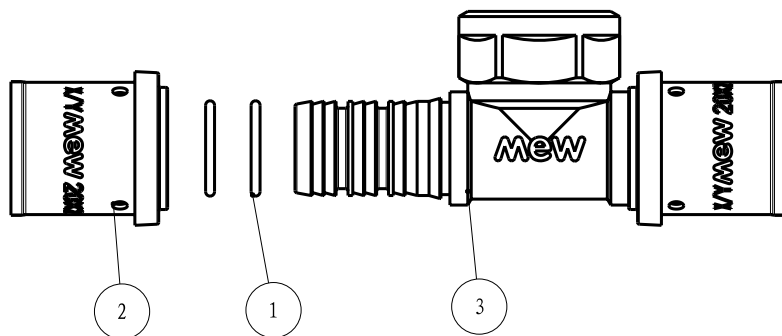
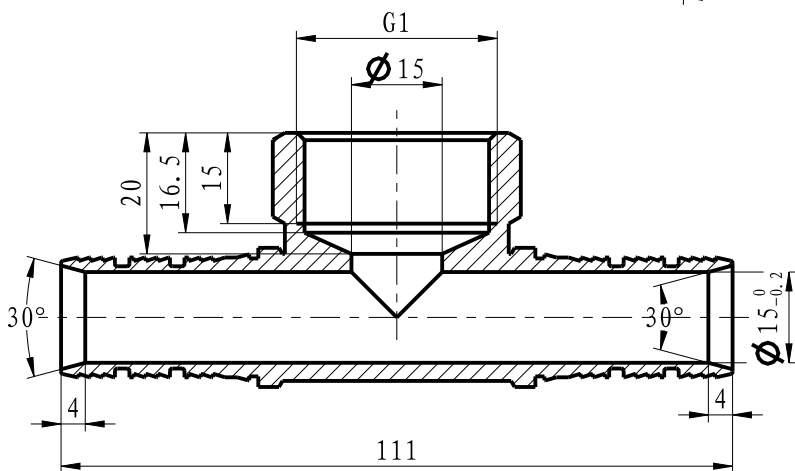
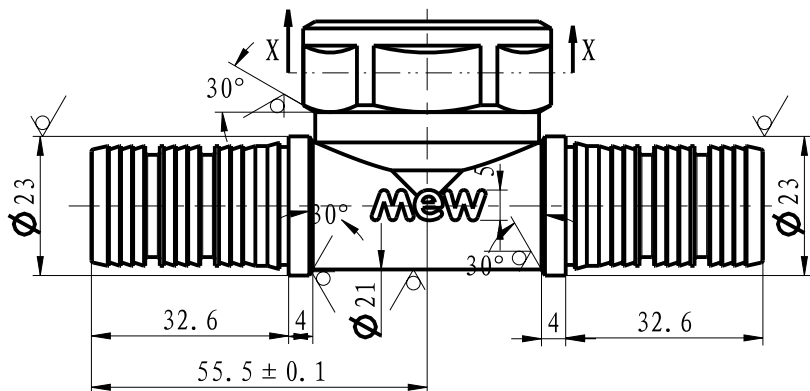
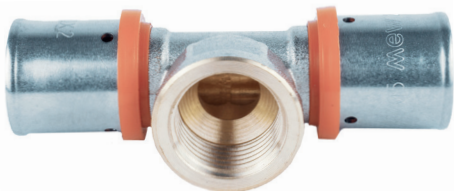
1. Peso: 193,6 gr



Ficha Técnica

PRESS Multicamada
Tê Rosca Fêmea
25 x 1" MW09030507

ESCOLHA DE PROFISSIONAL



Legenda e componentes:

Número	Componente	Material
1	Anel de vedação	EPDM
2	Casquilho	S304
3	Corpo	CW617N

Características técnicas:

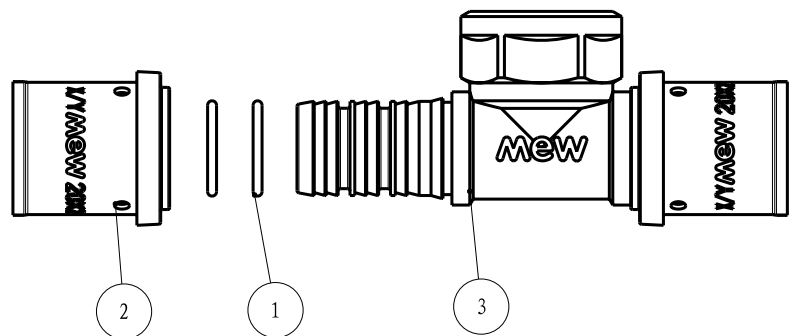
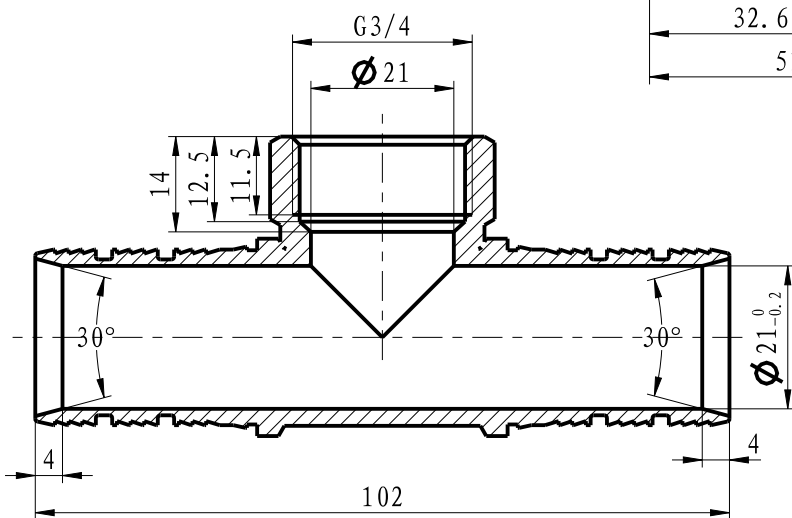
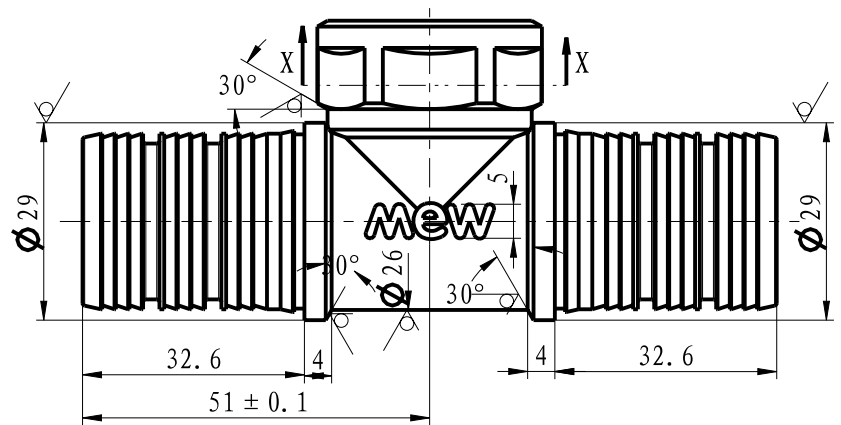
1. Peso: 246,6 gr



Ficha Técnica

PRESS Multicamada
Tê Rosca Fêmea
32 x 3/4" MW09030508

ESCOLHA DE PROFISSIONAL



Legenda e componentes:

Número	Componente	Material
1	Anel de vedação	EPDM
2	Casquilho	S304
3	Corpo	CW617N

Características técnicas:

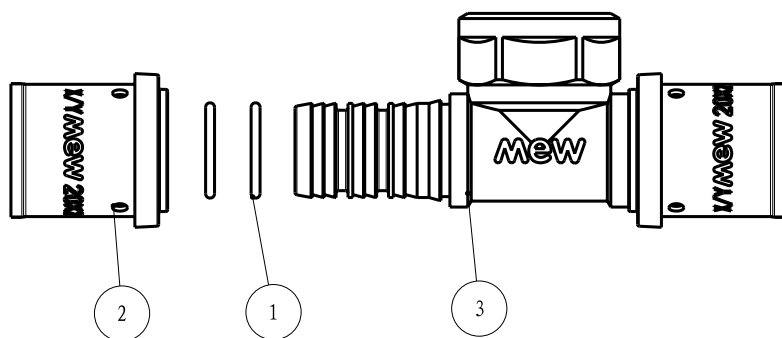
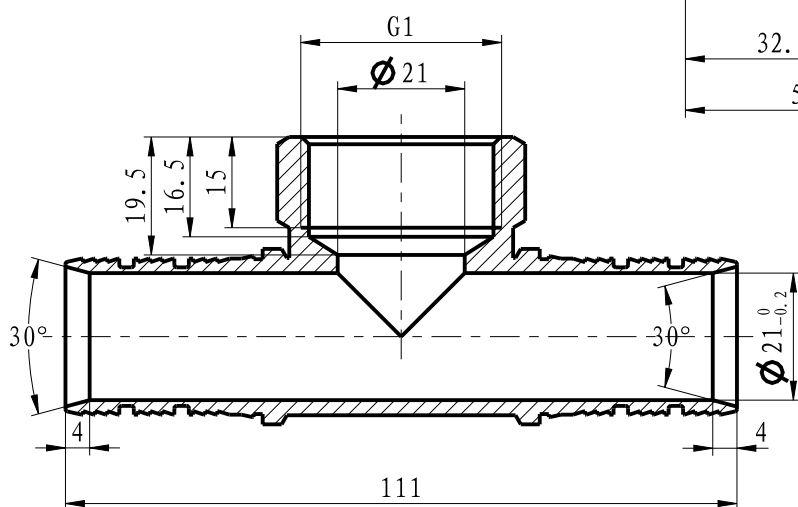
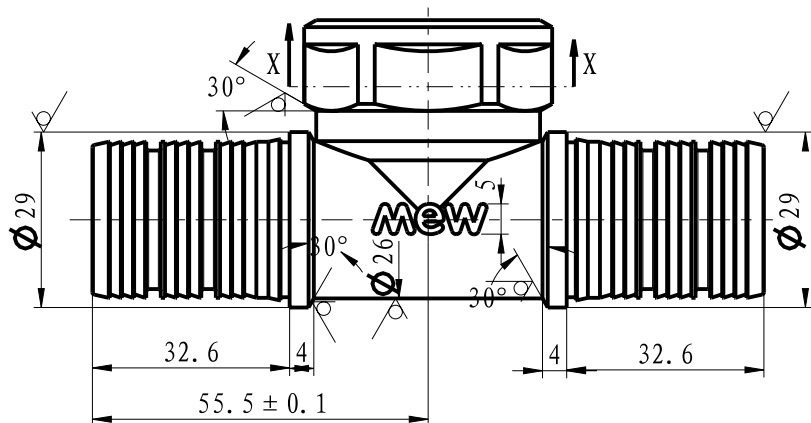
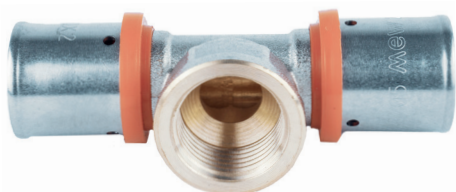
1. Peso: 230,4 gr



Ficha Técnica

PRESS Multicamada
Tê Rosca Fêmea
32 x 1" MW09030509

ESCOLHA DE PROFISSIONAL



Legenda e componentes:

Número	Componente	Material
1	Anel de vedação	EPDM
2	Casquilho	S304
3	Corpo	CW617N

Características técnicas:

1. Peso: 280,4 gr